

First Parish Unitarian Universalist of Medfield

26 North Street, Medfield,
MA

(508) 359-4594

www.firstparishmedfield.org



January Newsletter 2019

The Parson's Packet

Dear friends,

I'm writing this on Dec. 26, otherwise known as the day after Christmas. It is otherwise known as a few other things as well: It is the first day of Kwanzaa; it is Boxing Day; it is St. Stephen's Day; it is the day of the Wren King.

St. Stephen became the first Christian martyr (before there actually was "Christianity") by being so disputatious the out-of-patience orthodox filled him full of arrows. He kept talking anyway. This is either evidence of the miraculous or a very UU saint – maybe both. The Wren King is new to me. It is apparently celebrated especially in

some parts of Ireland with a deceased house wren (presumably a model these days) dressed up in miniature silks – in a "kingly" way – for which small coins are collected from onlookers who want a glimpse. All of the donations go to the Poor Box, or maybe some of them go to slake the thirst of the wren's entourage. It's not quite clear.

Boxing Day in America means getting rid of all the boxes. In other English-speaking lands it is a time for small presents generally distributed, not just to the family.

Apparently it is rooted in the custom of landlords providing a box of midwinter staples to their tenants, which was part of the lubrication of this once-ubiquitous relationship.

I noticed especially this year the flow of boxes peaked well before Christmas. In the age of Amazon is there anything that doesn't come in a cardboard box? I guess we owe a small shout-out to Jesse Jones, the man who invented the corrugated cardboard box and its mass manufacture. Otherwise we could still be wrapping stuff in burlap, but OMG we filled the recycling bins several times over well before the

arrival of any holiday star. On the other hand, cleaning up after Christmas has become easier.

We are hip-deep in multifarious meanings and traditions. They are multiplying by invention (like Kwanzaa) and by wider general awareness. They are acquiring sustained meaning (again, like Kwanzaa) or they are not. They are evolving as they go. UUs get to celebrate them all – or any – or none. Enjoy your holiday celebration-of-choice! Happy 2019!

Best wishes, Rev. David

Upcoming Services

Sunday – January 6

"A Janus Service"

Rev. David W. Chandler

The holidays fade, the New Year begins, the depth of winter comes – and our feelings may be ambivalent. This Sunday we will have rituals of Endings and Beginnings, letting go of what must now be past and welcoming our hopes and dreams for 2019. **Religious Exploration offered for children.**

Sunday – January 13

"Granite Statues, Feet of Clay"

Bill Wians

Who gets a statue in a public place, and why? Who doesn't, and how do they feel about that? How does an artifact on display have meaning? Whose meaning should it be and why does that matter? Bill serves as FPUU Clerk on our Executive Board. **Religious Exploration offered for children.**

Sunday – January 20

"Anger Management"

Rev. David W. Chandler

One of the *satyagraha* principles Dr. King learned from Gandhi was the management of anger in the personal and public sphere. It is like dynamite, of course. Handle with great care, especially when the ends seem to be overwhelmingly positive. **Religious Exploration offered for children.**

Sunday – January 27

"Outside Epiphany"

Rev. David W. Chandler

Saul was famously knocked off the donkey, but most UUs think in terms of Walden Woods or the Grand Canyon. Still, "direct experience" surprisingly remains our access point for "transcending mystery and wonder." How does that work? **Religious Exploration offered for children.**

Our Old Buildings -From the FPUU Website

You can find this page but going to [firstparishmedfield.org](https://www.firstparishmedfield.org). Click on the "About us" tab on the top, then "Our History" then "Archives" or click here: <https://www.firstparishmedfield.org/our-history/archives/>

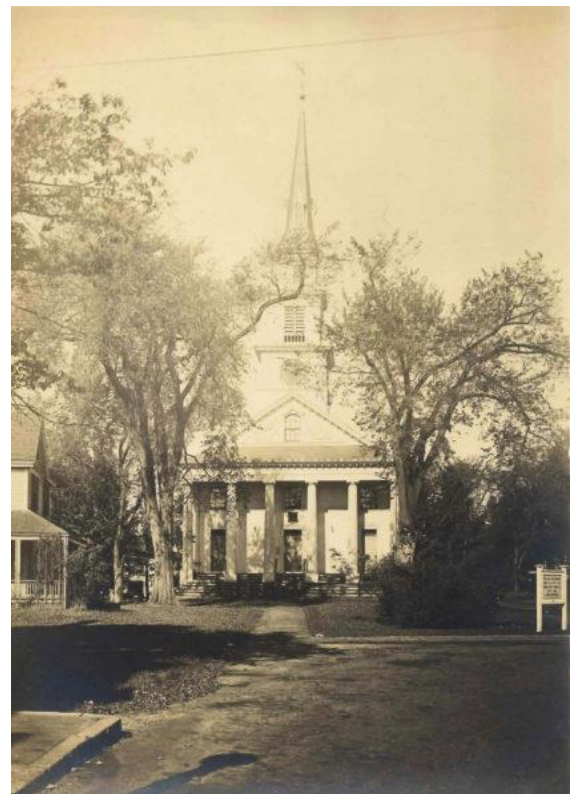
The Meeting House has changed over the years since it was first 'raised' in 1789.

Here is a picture of the Sanctuary, taken about 1926.



[If you peak behind the curtain where the candles and floral supplies are kept, you can see the original script before a wall was built in front of it.]

And here is how the exterior of First Parish looked, taken about the same time (note the pathway leading directly to the front entrance – traces of it still remain in our front yard!).



These two wonderful pictures were donated to First Parish by Ms. Deborah Merritt, granddaughter of the Rev Harold and Anita Pickett, co-Ministers at First Parish.

First Parish is beginning the process of digitizing some of its historic documents. With the help of Digital Commonwealth, two volumes of our historical records are now available on line.

The first is "Record of Prudential Committee meetings beginning November 13, 1939, ending September 16, 1947"

The second is simply titled "Medfield First Parish, some events, 1869-1871".

Both are available on line at archive.org.

[You can see that the U-house used to have a wraparound porch at one time.]

Green Sanctuary Committee



Green Sanctuary Committee News

Our next meeting is Friday January 11 in the vestry
6 pm -- potluck supper
7-9 pm – business (work and play)
All are welcome!

Food for thought

In the July 2017 letter from the UUA's Green Sanctuary Program Manager notifying First Parish of Medfield that our application for Green Sanctuary Accreditation had been approved "with flying colors," these words were included:

"The reviewers commend your continued work on sustainable living. They believe your work to expand the farmers market is important and effective. Your work to reduce carbon footprint, as well as attend to water use at First Parish and in households is critical ... you are indeed working to 'repair the world.'"

As a spiritual practice for the New Year, we invite you to become (or continue to be) mindful about your personal, and our communal, steps to "repair the world."

Questions? Contact Jeanette Ruyle
jruyle23@verizon.net. We welcome input and interest! Come to a meeting!



THANK YOU FIRST PARISH MEDFIELD & MEETING HOUSE LUNCH CLUB!!!!

Thanks to the generosity of First Parish Medfield and Meeting House Lunch Club guests a basket overflowing with gloves, hats and scarves was collected and will be distributed by Chaplains on the Way Homeless Ministry.

CHAPLAINS ON THE WAY OF WALTHAM MA

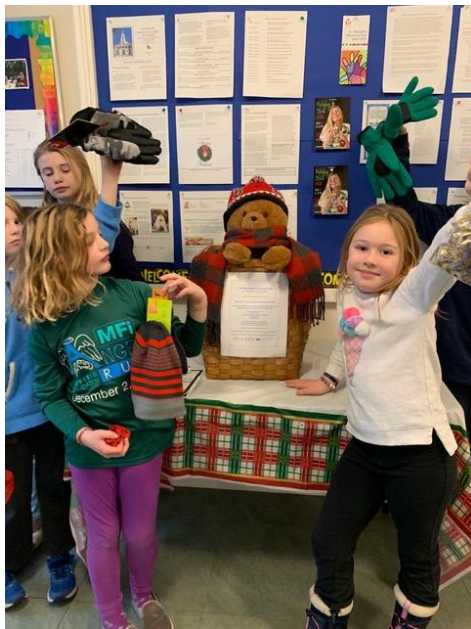
OUR MISSION

We go out into the streets, shelters, and gathering places of Waltham to bring a ministry of spiritual care and hope. We live out our mission by building trusting relationships with those who are experiencing homelessness, living in poverty, dealing with mental illness and/or addiction. We offer a ministry of spiritual care, listening, and companionship through life's struggles and triumphs.

OUR VISION

No person suffering from homelessness or poverty in Waltham will feel they have to walk alone. In working toward our vision, we expand the circle of care for those we serve by providing a bridge to social services agencies. We also act as a bridge with faith communities and schools to educate and raise awareness by providing opportunities to become involved and experience our chaplaincy. This work inspires us to advocate for systemic change on the issues of homelessness, mental illness, and addiction.

Louse Rachin



First Parish Medfield Elves collecting Chaplains on the Way hat, gloves and scarf donations.



Louise Rachin, Meeting House Lunch Club Site manager, with Sally Demler, Chaplains on the Way representative.

NEW Adult Faith Development* monthly groups-- "Chalice Circles for Spirituality and..."

We feel spiritual when we feel a deep connection with something greater than ourselves- with the natural world, with those who have gone before, with a creative spirit, with God. ~uua.org

Starting on Sunday **January 13, 2019**, five monthly sessions centering on "Spirituality and ..." will be offered at First Parish in the U House, **11:45 am -1:15 pm**.

The topics are

- Spirituality and Religion
- Spirituality and Worship
- Spirituality and Practice
- Spirituality and Faith
- Spirituality and Living in Our World

The gatherings are open to any adult. Although there is an intended progression, each session is a stand-alone opportunity. Intention to attend is appreciated but not required.

Sessions are 1.5 hours long and structured with a welcome, chalice lighting, covenant review, check-in, readings, sharing and deep listening, and a closing.

The group covenant:

- confidentiality
- respect our time together, beginning and ending on time
- keep discussion focused on topic
- invitation but not expectation to share
- speak from your own experience
- assume good intentions
- refrain from talking at people

These Chalice Circles are a type of Small Group Ministry and similar to Covenant Groups with a few differences.

Please direct any questions you have to Jeanette Ruyle who will be the facilitator for the five gatherings. Jruyle23@verizon.net



*or Faith Formation, Religious Education, Spiritual Growth—take your pick.

Notes from the Church Office:



Please remember the following deadlines:

Church Newsletter: Third Sunday of the month. **January 20th**

Order of Service: Wednesdays by 5:00 pm.

Church Office Hours: Mondays & Thursdays from 9:00 am to 3:00 pm.

Email: admin@firstparishmedfield.org

Sandra Andreassi-Administrator

Follow us on Facebook & Instagram



Facebook@

<https://www.facebook.com/FirstParishMedfield/>

Instagram @

firstparishmedfield



Weather ALERTS:

Yes. It's that time of year. If a Sunday service is delayed or canceled, an ALERT will be posted on our website, firstparishmedfield.org. We will also send an email to everyone through MailChimp. The decision will be made no later than 7:00 a.m. on Sunday.

– Executive Board

Christmas Eve Candle Light Service Donation



We are pleased to announce that a total of \$502.50 was split between The Medfield Food Cupboard and Chaplains on the Way following the Christmas Eve Candle Light Service. Thank you to all those who contributed!

YOU Make
a Difference

Supporting FPUU through Amazon.com and Equal Exchange



If you are using Amazon.com, you can help support First Parish! To order on

Amazon, please use this link: [http://www.amazon.com/exec/obidos/redirect-](http://www.amazon.com/exec/obidos/redirect-home/firstparisuuch01)

[home/firstparisuuch01](http://www.amazon.com/exec/obidos/redirect-home/firstparisuuch01) First Parish will receive about 5% of what you order and will not cost you anything!!! (One important note - if you had items in your Amazon 'shopping basket' before using this link, First Parish won't get the benefit of your shopping. Only items placed in the shopping basket AFTER clicking the above link help)



Equal Exchange only sells "Fair Trade" products - by dealing directly with small farmers and co-ops, they insure that the growers and producers get a fair market price for their products - and you get some of the best produce at a reasonable price. First Parish adds 15% to the Equal Exchange price, so your purchase also helps to support the work of the church. For information on ordering from Equal Exchange, click on this link:

<http://www.firstparishmedfield.org/cms/component/content/article/45-amazon/76-ee>

The Medfield Food Cupboard



The Medfield Food Cupboard thanks you for your on-going support. Your continued efforts help us to maintain a huge service that would be so difficult to maintain without your generosity. These are the current needs:

Juice-large/boxes
Raisins (snack size)
Beef Stew
Peanut Butter

Jelly
Individual Boxed Snacks (granola bars, fruit bars, PB crackers, etc.)

Thanks to the community's generosity, we are currently fully stocked on soup.

Please double check your food items to ensure that they are undented, unopened, and unexpired. Thanks for your efforts. Any donations are greatly appreciated and can be placed in the basket in the narthex.





EXPRESSO YOURSELF COFFEEHOUSE

Storyteller Rich Berg to feature at Espresso Yourself Coffeehouse on January 26



On January 26, Espresso will be welcoming storyteller Rich Berg. Berg is the producer and co-host of *For the Love of Words* filmed at Easton Community Cable, and the program developer and co-instructor of the Poetry Workshops at the Ames Free Library, both in Easton, MA. He has featured at *Wake Up and Smell the Poetry* in Hopkinton and the *South Coast Center for the Arts*, as well as dozens of other venues. His poetry & photography appear in several publications and galleries. Rich has a B.S.B.A degree from Suffolk University and teaches

writing and about overcoming adversity. He is a brain injury survivor and an advocate for the Brain Injury Association of Massachusetts.

The Espresso Yourself Coffeehouse is an opportunity for spoken word artists to share their poetry, stories, and songs. It is held the last Saturday of every month at 7pm at First Parish Unitarian Universalist, Medfield, MA. Open mic readers have 6 minutes to share. Original or non-original poetry, stories, performance art, music or songs welcome. Sticking to theme encouraged.

Teens and adults welcome. Refreshments are served. Medfield TV films event and posts to YouTube.
\$10 suggested donation (\$5 open mic participants; \$3 students)



SAVE THE DATE(S)!!!



**FIRST PARISH MEDFIELD
POTLUCK SMALL SUPPERS**

Hosted in the Homes of First Parish Members
the Evenings of Saturday February 9th
and Saturday February 16th

Invitation to follow

In the meantime, mark your calendar!

"LOVE WILL GUIDE US"

Annual Fund Drive 2019-2020

FPUU Calendar of Events

Tuesday, January 1	New Year's Day
Monday, January 7	Meetinghouse Lunch Club/11:00 am/Vestry The Larger Circle Band/7:30 pm/Vestry
Tuesday, January 8	Pastoral Care Committee Meeting/7:00 pm/U-House
Wednesday, January 9	Fund Drive Committee Meeting/7:00 pm/Offsite
Thursday, January 10	Worship & Music Committee Meeting/7:15 pm/Vestry
Friday, January 11	Green Sanctuary Potluck Meeting/5:30 pm/Vestry
Sunday, January 13	Adult Faith Development/11:45 am/U-House
Monday, January 14	The Larger Circle Band/7:30 pm/Vestry
Thursday, January 17	Executive Board Meeting/7:30 pm/U-House
Friday, January 18	Green Sanctuary Committee Meeting/7:00 pm/Offsite
Saturday, January 19	NewLife Home Refurnishings/Volunteer Day
Sunday, January 20	Newsletter Deadline
Monday, January 21	MLK Day/Office Closed The Larger Circle Band/7:30 pm/Vestry
Tuesday, January 22	Membership Meeting/7:00 pm/Offsite
Thursday, January 24	RE Meeting/6:30 pm/Vestry
Saturday, January 26	Expresso Yourself Coffeehouse/Vestry
Monday, January 28	The Larger Circle Band/7:30 pm/Vestry
Tuesday, January 29	Meetinghouse Task Force Meeting/7:00 pm/U-House

